

EST · 1847

SEARCYS

LONDON

VENUE

Collection

2025

A VENUE FOR
EVERY EVENT



@SEARCYSLONDON

INTRODUCTION

Hello
from Searcys



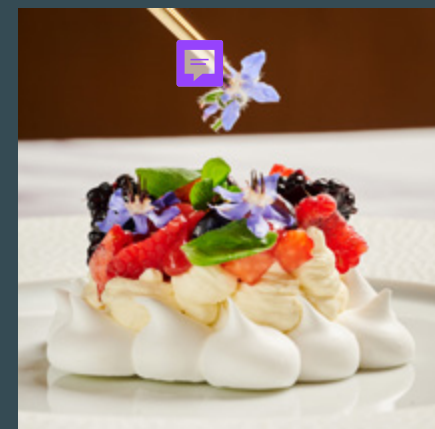
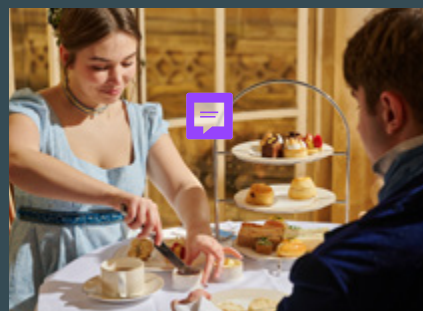
We have been at the heart of events since Searcys was founded in 1847.

We've got fabulous seasonal menus, cocktails and Champagne at the ready, and a team of event planners, chefs, bakers, mixologists and front-of-house experts to create your dream event.

Our founder, John Searcy was described in his time as 'gentle, courteous and masterful', traits which inspired undying loyalty in his household, business staff and all who crossed his path, repaying his confidence with lifelong service.

This legacy lives on at Searcys today, and these traits are all still fundamental to each of us. We're enormously proud of every step of the Searcys story and alongside the flawless quality we deliver, our heritage continues to inspire us as we create and deliver special moments for our guests.

0207 101 0220
searcys@thecollectionevents.com



inclusion by design

ENLIGHT

In 2025, we are launching our EDI Champions scheme and have committed to conduct a Venue Inclusion review at every venue.

SUNFLOWER
HIDDEN DISABILITIES

As members of Sunflower, a Hidden Disability scheme, we have signed a pledge to train 80% of our team members in hidden disabilities awareness.

disability
confident
EMPLOYER

We have been awarded the Disability Confident Employer certificate, which helps ensure all employees can fulfil their potential.

HENPICKED

We are committed to becoming a Menopause—friendly employer in partnership with Henpicked.

S sociability

We provide accessibility audits for our bars and brasseries and share the details on the Sociability app and our websites.

nurturing & growing talent

ilm
RECOGNISED

We are an ILM-accredited training provider focussing on leadership skills and EDI development.

i belong
@SEARCY'S
LONG SERVICE
AWARDS

We celebrate our people's contributions and loyalty with annual Long Service and People Awards.



Searcys apprenticeship plan offers 40+ development programmes for our colleagues.



We work with our nominated charities Hotel School, New Horizons Youth Centre (Euston), and Julian House (Bath) in helping those at risk of unemployment and homelessness find jobs in hospitality.

HOTEL
SCHOOL

13 graduates from Hotel School are currently working in our business.

progressive partnerships



We champion British beef, pork, chicken and bacon across our event menus.



We use British grown and milled flour from growers signed up to Wild Farmed regenerative standards.



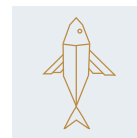
We champion cooking chocolate from the Islands Chocolate farm in St. Vincent and the Grenadines.



We champion natural filtered on-site water where possible, or Harrogate Water in glass bottles.



Our teas are responsibly sourced and are either Rainforest Alliance certified, organic or directly traded.



We proactively engage with our fishmongers to ensure they work towards only supplying MCS (Marine Conservation Society) Good Fish Guide rated 1–3 fish and seafood.



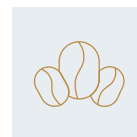
We champion seasonal British fruit and vegetable produce, with hero ingredients traced to an individual farm.



In our recipes, we champion British-harvested rapeseed oil from R-Oil, farmed in ways improving soil quality.



We promote mindful drinking by providing premium no- and low-alcohol options.



Our coffee comes from Notes Coffee Roasters which supports community farms and uses its Roas-Tree scheme to help fight deforestation.



All fresh eggs used in our kitchens are British free-range and RSPCA-certified from St Ewe Farm.



Plant-based and vegetarian dishes are a key part of our menus, with the goal to make them 25% of all menus by the end of 2025.



We work with the best English Sparkling Wine producers, and have created our own label with a vineyard in Guildford.



We will only use British RSPCA-assured fresh milk by the end of 2025.



In 2025 we are launching Nourish by Searcys conference menu package designed to offer maximum nutritional benefit for minimum environmental impact. All recipes have a low–moderate CO₂ footprint, measured using our Nutritics system.

step up



In 2025 we pledge to have a sustainability champion in every Searcys venue.

isla.

We are proud members of isla., a sustainability in events network focused on driving best practice in sustainability in events.



We measure and set ourselves annual targets to reduce carbon impact of our purchased goods and services (Scope 3).



Wherever possible we use porcelain crockery, glassware and metal cutlery.

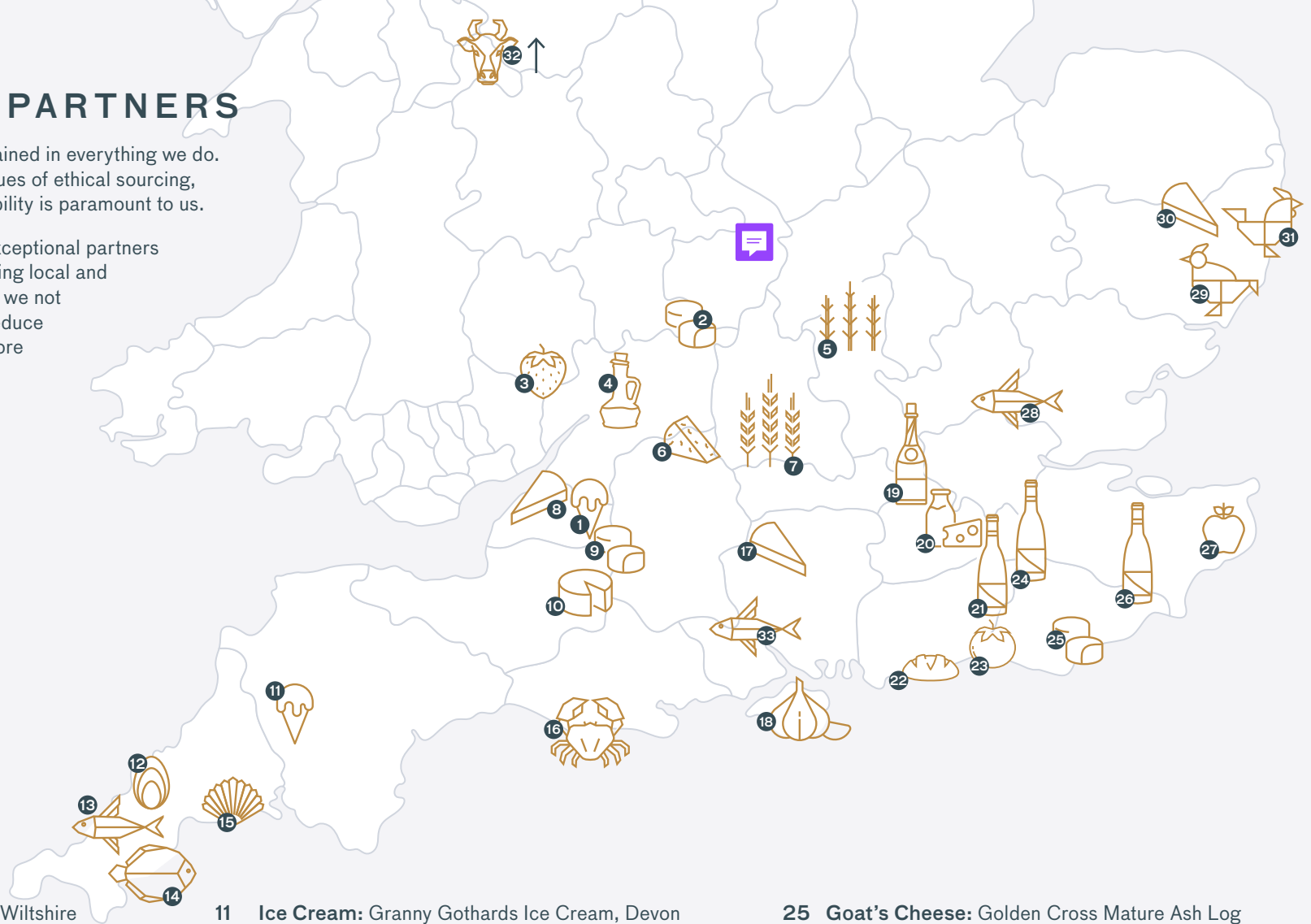


We are proactive about food waste, seeking to do all we can to minimise it from menu design, to portion size, measurement and separation.

LOCAL BRITISH PARTNERS

Our commitment to sustainability is ingrained in everything we do. Ensuring that our suppliers share our values of ethical sourcing, traceability, and environmental responsibility is paramount to us.

We take pride in curating a network of exceptional partners who uphold these standards. By prioritising local and seasonal produce for all Searcys events, we not only support our communities but also reduce our carbon footprint, contributing to a more sustainable future.



- 1 **Ice Cream:** Marshfield Ice Cream, Wiltshire
- 2 **Goat's Cheese:** Ashlynn Goat's Cheese, Worcestershire
- 3 **Strawberries:** Windmill Hill, Herefordshire
- 4 **Rapeseed Oil:** Cotswolds
- 5 **Samphire:** Mudwalls Farm, Warwickshire
- 6 **Blue Cheese:** Oxford Blue Cheese, Burford, Oxfordshire
- 7 **Flour:** Wildfarmed
- 8 **Soft Cheese:** Bath Soft Cheese, Somerset
- 9 **Goat's Cheese:** Driftwood Goat's Cheese, Bagborough, Somerset
- 10 **Cheddar Cheese:** Keens Cheddar Cheese, Moorhayes Farm, Somerset

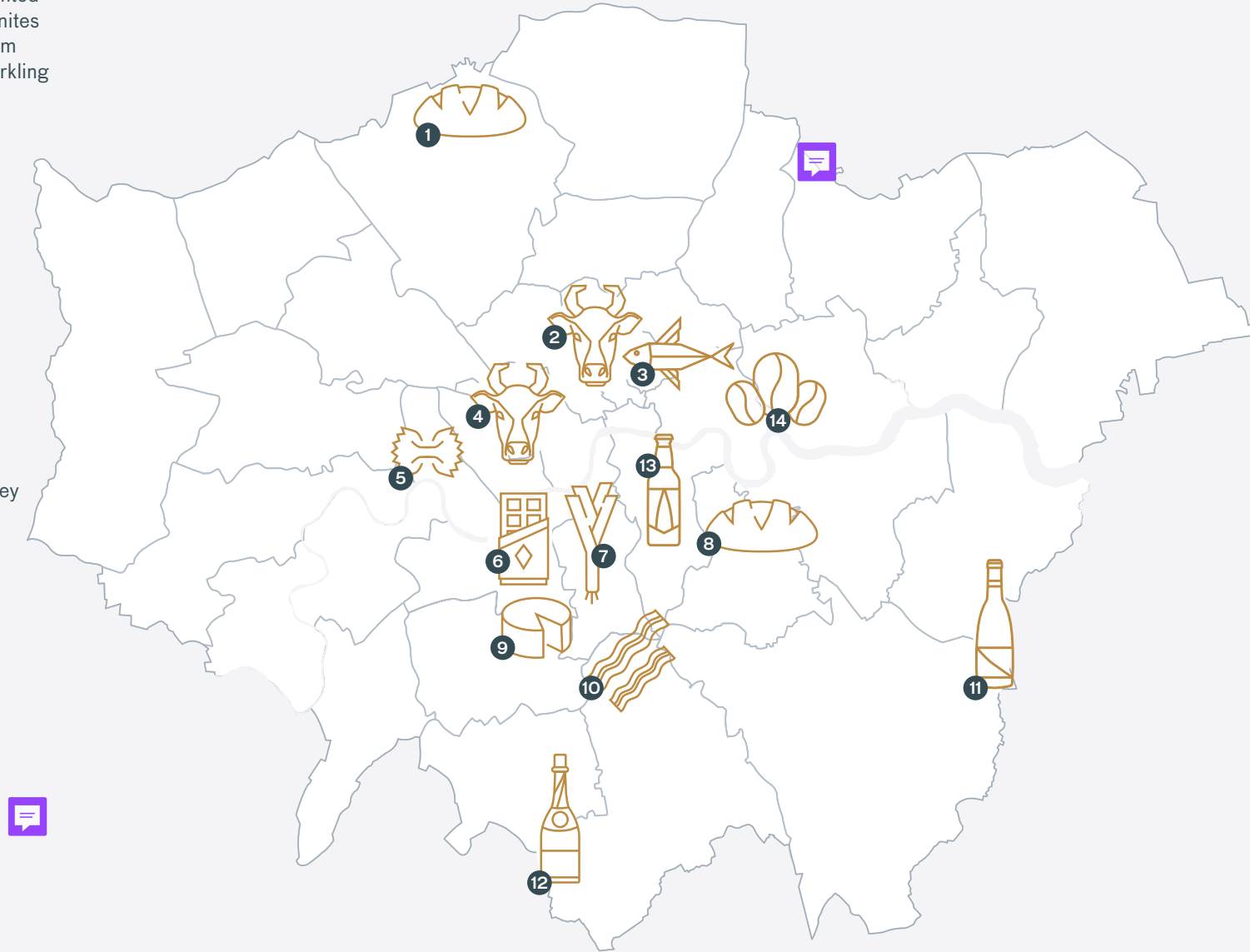
- 11 **Ice Cream:** Granny Gothards Ice Cream, Devon
- 12 **Eggs:** St Ewe, Cornwall
- 13 **Fish:** Flying Fish, Cornwall
- 14 **Brill:** Newlyn, Cornwall
- 15 **Scallops:** Cornwall
- 16 **Shellfish:** Portland Shellfish, Dorset
- 17 **Soft Cheese:** Tunworth Soft Cheese, Hampshire
- 18 **Garlic:** Isle of Wight, Hampshire
- 19 **Searcys English Sparkling Wine:** Guildford, Surrey
- 20 **Dairy:** West Horsley Dairy, Surrey
- 21 **Wine:** Albourne Estate, Sussex
- 22 **Bakery:** Piglets Pantry, Sussex
- 23 **Heritage Tomatoes:** Nutbourne Nurseries, Sussex
- 24 **Wine:** Chapel Down and Balfour Vineyards, Kent

- 25 **Goat's Cheese:** Golden Cross Mature Ash Log Cheese, Sussex
- 26 **Wine:** Gusbourne Vineyard, Kent
- 27 **Apples:** Kent
- 28 **Fish:** Marr Fish, Essex
- 29 **Guinea fowl:** Suffolk
- 30 **Soft Cheese:** Baby Baron Bigod Cheese, Jonny Crickmore Fen Farm, Suffolk
- 31 **Chicken:** Crown Farm, Suffolk
- 32 **Meat:** Lake District Farmers
- 33 **Trout:** ChalkStream Foods, Romsey

LOCAL LONDON PARTNERS

In our primary food and beverage selections, we're delighted to showcase our Local London partners. This initiative unites our London-based partners for a personalised touch; from Chapel Down wine to our exclusive Searcys English Sparkling Wine, each product carries its own unique narrative.

- 1 **Bakery:** Bread Factory
- 2 **Meat:** Fenn's of Piccadilly
- 3 **Fish:** Direct Seafood
- 4 **Meat:** IMS Smithfield
- 5 **Pasta:** La Tua Pasta
- 6 **Chocolate:** Islands Chocolate
- 7 **Fruit and vegetables:** First Choice Produce and County Supplies Limited
- 8 **Bread:** Paul Rhodes Bakery
- 9 **Cheese:** Harvey and Brockless
- 10 **Cured meats:** London Smoke and Cure
- 11 **Wine:** Chapel Down and Balfour Vineyards, Kent
- 12 **Searcys English Sparkling Wine:** Guildford Surrey
- 13 **Beer:** Small Beer Brew Co
- 14 **Coffee:** Notes Coffee Roasters



Searcys Venue Collection



A creative and culinary force of nature, our founder John Searcy began his illustrious career as the confectioner for the Duke of Northumberland before venturing out on his own and taking his talents to London where he founded Searcys in 1847. Searcys soon became a hit amongst the capital's high society, gaining a reputation as the go to events company for exceptional quality. Then in 1870, John was awarded a Royal Warrant and the title: Confectioner to HRH the Prince of Wales and wine merchant.

Today, Searcys is in residence at many iconic and historic venues. Our partners include The Gherkin, St Pancras International and many more. Events are still central to what we do, but now, we are also famed for our destination restaurants, afternoon teas and bars. Searcys doesn't just offer masterfully prepared food and drink, we deliver a warm-hearted welcome to all our guests.

**It's more than a meal or a glass of Champagne.
It's a unique experience.**



Where to find us

London

- 1 {10–11} Carlton House Terrace
- 2 30 Euston Square
- 3 41 Portland Place
- 4 116 Pall Mall
- 5 The Barbican
- 6 Searcys Bar at Battersea Power Station
- 7 Church House, Westminster

- 8 Gray's Inn
- 9 Searcys at The Gherkin
- 10 The HAC
- 11 Horizon 22
- 12 The Inner Temple
- 13 IET London: Savoy Place
- 14 No. 11 Cavendish Square
- 15 National Army Museum

- 16 One Moorgate Place
- 17 The Portrait by Richard Corrigan at the National Portrait Gallery
- 18 St Pancras Bar and Brasserie
- 19 Stationers' Hall
- 20 Surveyors House at RICS Westminster
- 21 The Royal Institution
- 22 The View London

- 23 Vintners' Hall
- 24 Barber-Surgeons' Hall
- 25 Saddlers' Hall
- 26 Carpenters' Hall
- 27 Searcys Bar and Brasserie at Surveyors House, Westminster

SEARCYS VENUE COLLECTION 2025

LONDON

| Venue | Contact | Nearest Tube Station | Theatre | Cabaret | Dinner | Dinner Dance | Standing Reception | Terrace or Garden Standing | Boardroom |
|---|---|---------------------------------------|---------|---------|--------|--------------|--------------------|----------------------------|-----------|
| {10-11} Carlton House Terrace | 020 7969 5200 info@10-11cht.co.uk | Charing Cross / Piccadilly Circus | 125 | 70 | 100 | 100 | 200 | 150 | 34 |
| 30 Euston Square | 020 8453 4610 30eustonsquare@searcys.co.uk | Euston Station / Euston Square | 290 | 120 | 160 | 160 | 300 | 70 | 40 |
| 41 Portland Place | 020 3141 3255 enquiries@41portlandplace.com | Great Portland Street / Oxford Circus | 80 | 50 | 60 | 60 | 150 | 40 | 28 |
| 116 Pall Mall | 020 7101 0220 116pallmall@searcys.co.uk | Charing Cross | 350 | 176 | 250 | 180 | 350 | 100 | 90 |
| Barber-Surgeons' Hall | 020 7517 3500 sales@barber-surgeonshall.com | Moorgate | 140 | 80 | 120 | 80 | 200 | 60 | 50 |
| The Barbican | 020 7382 7246 Business.Events@barbican.org.uk | Barbican | 1942 | 150 | 180 | 120 | 650 | 650 | 20 |
| Searcys Bar at Battersea Power Station | 020 7101 0220 searcys@thecollectionevents.com | Battersea Power Station | N/A | N/A | N/A | N/A | 80 | N/A | N/A |
| Carpenters' Hall | 020 7517 3500 sales@carpentershall.co.uk | Moorgate / Bank | 220 | 140 | 200 | 150 | 350 | – | – |
| Church House | 020 7101 0220 searcys@thecollectionevents.com | St James's Park | 600 | 208 | 372 | 300 | 550 | N/A | 55 |
| Gray's Inn | 020 7458 7960 venue@graysinn.org.uk | Chancery Lane / Farringdon / Holborn | 170 | 42 | 176 | 100 | 180 | 600 | 48 |
| Searcys at The Gherkin | 0330 107 0815 entertaining@searcys.co.uk | Bank / Liverpool Street | 140 | 72 | 130 | 130 | 260 | N/A | 30 |
| The HAC | 020 7382 1533 sales@hac.org.uk | Moorgate | 400 | 240 | 350 | 350 | 690 | 5000 | 48 |
| Horizon 22 | 0203 872 7640 Horizon22events@searcys.co.uk | Bank / Liverpool Street | – | – | 280 | 210 | 500 | – | – |
| Inner Temple | 020 7797 8230 VenueHire@innertemple.org.uk | Blackfriars / Temple | 270 | 105 | 240 | 130 | 400 | 600 | 40 |
| IET London: Savoy Place | 020 7344 5479 savoyplace@ietvenues.co.uk | Waterloo | 450 | 144 | 250 | 200 | 330 | 200 | 30 |
| No. 11 Cavendish Square | 020 7307 2474 venue@11cavendishsq.com | Oxford Circus | 280 | 120 | 240 | 240 | 350 | 100 | 24 |
| National Army Museum | 020 7730 0717 venuehire@nam.ac.uk | Sloane Square | 200 | 64 | 180 | 100 | 540 | N/A | 24 |
| One Moorgate Place | 020 7920 8613 events@onemoorgateplace.com | Moorgate / Bank | 270 | 160 | 200 | 200 | 400 | N/A | 30 |
| The Portrait by Richard Corrigan at the National Portrait Gallery | events@theportraitrestaurant.co.uk | Charing Cross / Leicester Square | N/A | N/A | 80 | N/A | 150 | N/A | N/A |
| Saddlers' Hall | 020 7517 3500 sales@saddlershall.com | St Paul's | 150 | 80 | 120 | 80 | 200 | 120 | – |
| St Pancras Bar and Brasserie | 020 7923 5455 stpancrasevents@searcys.co.uk | King's Cross St Pancras | N/A | N/A | 180 | 150 | 250 | 400 | 14 |
| Stationers' Hall | 020 7246 0999 marketing@stationers.org | St Paul's | 200 | 96 | 200 | 156 | 400 | 150 | 32 |
| Surveyors House at RICS Westminster | surveyorshouse@searcys.co.uk | Westminster | 130 | 80 | 90 | 90 | 210 | 40 | 25 |
| Searcys Bar and Brasserie at Surveyors House, Westminster | 020 3911 6116 events@searcysatwestminster.co.uk | Westminster | – | – | 60 | – | 60 | – | – |
| The Royal Institution | 0207 491 6565 venuehire@ri.ac.uk | Green Park | 440 | 56 | 140 | 90 | 750 | N/A | 42 |
| The View at RCS | 020 7869 6703 theview@rcseng.ac.uk | Holborn | 300 | 120 | 220 | 220 | 300 | 300 | 63 |
| Vintners' Hall | 020 7248 4704 searcys@vintnershall.co.uk | Mansion House | 150 | 80 | 120 | 100 | 250 | 25 | 25 |

UK

| Venue | Contact | Nearest Tube Station | Theatre | Cabaret | Dinner | Dinner Dance | Standing Reception | Terrace or Garden Standing | Boardroom |
|---------------------|---|----------------------|---------|---------|--------|--------------|--------------------|----------------------------|-----------|
| The Pump Room, Bath | 01225 444 477 events.bath@searcys.co.uk | Bath Spa | 300 | 120 | 200 | 160 | 300 | 80 | 25 |

NEW: GRAY'S INN

NEAREST TUBE STATION: CHANCERY LANE / FARRINGTON / HOLBORN

Gray's Inn is a prestigious and historic event venue located in Central London, offering a blend of tradition and grandeur. Situated near Chancery Lane station and close to The City, it provides an ideal setting for weddings, corporate events, and private celebrations. The venue boasts eight versatile event spaces, including two licensed rooms for weddings, available throughout the year for a variety of occasions. In addition, The Walks—a stunning five-acre garden—serves as a peaceful retreat in the heart of London, with a spacious marquee available in June and July for summer events, ensuring a memorable outdoor experience.



Capacities

Theatre: 170
Cabaret: 42
Dinner: 176
Dinner dance: 100
Standing reception: 180
Terrace or garden: 600
Boardroom: 48

{10-11} CARLTON HOUSE TERRACE

NEAREST TUBE STATION: CHARING CROSS / PICCADILLY CIRCUS

Grand in scale, intricate in detail, {10-11} Carlton House Terrace is an iconic venue in the history of London, and an exceptional canvas for any event – from wedding receptions and corporate conferences to banquets and summer parties. Renowned as the home of the British Academy and former residence of 1868 Prime Minister William Gladstone, this London venue has an unrivalled location overlooking St James's Park, Whitehall and The Mall.

[FIND OUT MORE](#)



Capacities

Theatre: 125
Cabaret: 70
Dinner: 100
Dinner dance: 100
Standing reception: 200
Terrace or garden standing: 150
Boardroom: 34

30 EUSTON SQUARE

NEAREST TUBE STATION: EUSTON STATION / EUSTON SQUARE

A Grade II* listed award-winning events venue in a perfect central London location.

From meeting and conference spaces to private dining, weddings and rooftop receptions, there is an abundance of flexible settings at 30 Euston Square to make your event a success.

[FIND OUT MORE](#)



Capacities

Theatre: 290
Cabaret: 120
Dinner: 160
Dinner dance: 160
Standing reception: 300
Terrace or garden standing: 70
Boardroom: 40

41 PORTLAND PLACE

NEAREST TUBE STATION: GREAT PORTLAND STREET / OXFORD CIRCUS

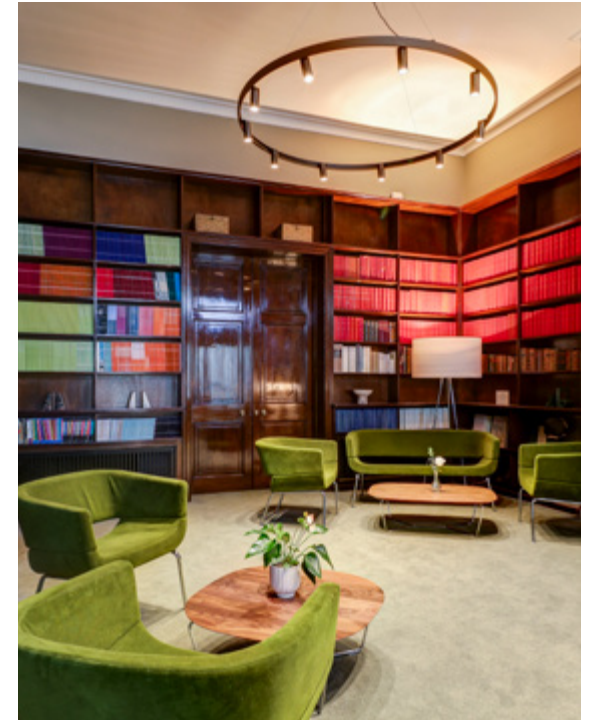
A beautiful boutique venue in the heart of Marylebone. Our Grade II listed Georgian Townhouse is Home to the Academy of Medical Sciences.

Its' Georgian architecture boasts with many period features and combines elegance with sophisticated technology to host a wide variety of events for up to 250 attendees.

41 Portland Place hospitality is operated by newly appointed Searcys, a renowned restaurateur and events caterer, which will see the oversee the delivery of your event from the initial enquiry to the seamless operation on the day.

At 41 Portland Place, we ensure our clients enjoy the best in technology, comfort and hospitality.

[FIND OUT MORE](#)



Capacities

Theatre: 80
Cabaret: 50
Dinner: 60
Dinner Dance: 60
Standing Reception: 150
Terrace or Garden: 40
Boardroom: 28

116 PALL MALL

NEAREST TUBE STATION: CHARING CROSS

With five floors of event space including seven ornate function rooms, a state of the art business centre and meeting rooms, 116 Pall Mall is able to cater for a range of corporate or private events.

With five areas licensed for weddings, the ornate and sweeping grand staircase and the gallery can also be personalised for a special wedding day. We also have a private garden which provides the perfect backdrop for photographs and can be hired in the summer months for drinks receptions of up to 300.

[FIND OUT MORE](#)



Capacities

Theatre: 350
Cabaret: 176
Dinner: 250
Dinner dance: 180
Standing reception: 350
Terrace or garden standing: 100
Boardroom: 90

BARBER-SURGEONS' HALL

NEAREST TUBE STATION: MOORGATE

A grand townhouse hidden from the bustle of the City. Barber-Surgeon's Hall is an elegant venue with wonderfully laid out reception rooms that lead into the magnificent Great Hall.

Rooms are flooded with natural light and panelled in Japanese oak, the venue has a stunning terrace overlooking a historic herb garden, making it a sought-after location for events.

[FIND OUT MORE](#)



Capacities

Theatre: 140
Cabaret: 80
Dinner: 120
Dinner dance: 80
Boardroom: 50
Standing reception: 200

THE BARBICAN

NEAREST TUBE STATION: BARBICAN

Set in one of the most iconic Brutalist buildings in the world, the Barbican has a range of auditoria, rooms and spaces that can be hired for a wide variety of events, from conferences, AGMs, photo shoots and product launches to meetings, receptions and weddings.

[FIND OUT MORE](#)



Capacities

Theatre: 1942

Cabaret: 150

Dinner: 180

Dinner dance: 120

Standing reception: 650

Terrace or garden standing: 650

Boardroom: 20



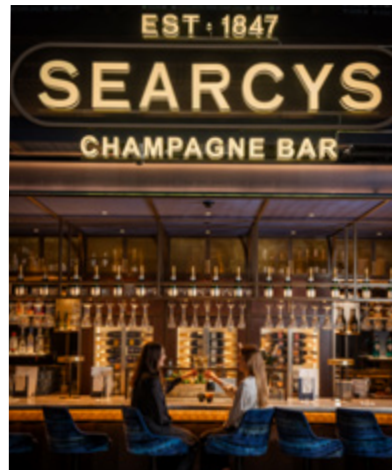
SEARCYS BAR AT BATTERSEA POWER STATION

NEAREST TUBE STATION: BATTERSEA POWER STATION

The brand-new opening, Searcys Champagne Bar has opened at the iconic Battersea Power Station. It is located on Level 1 in the Power Station's Art Deco Turbine Hall A, next to the Food Arcade and Lift 109, serving an extensive list of champagne and English sparkling wine, paired with small bites and seafood platters.

The 76-cover Searcys bar features a mix of plush, deep blue velvet seating with polished brass detailing, a 15-cover marble-topped bar and a semi-private recessed booth, available to book for up to 10 guests. Bright and airy with floor-to-ceiling windows, the Champagne bar walls will be adorned with three bespoke pieces of art by celebrated artist, Kristjana Williams, specially commissioned by Searcys to capture the London landscape with the company's signature twist.

[FIND OUT MORE](#)



Capacities
Reception: 80

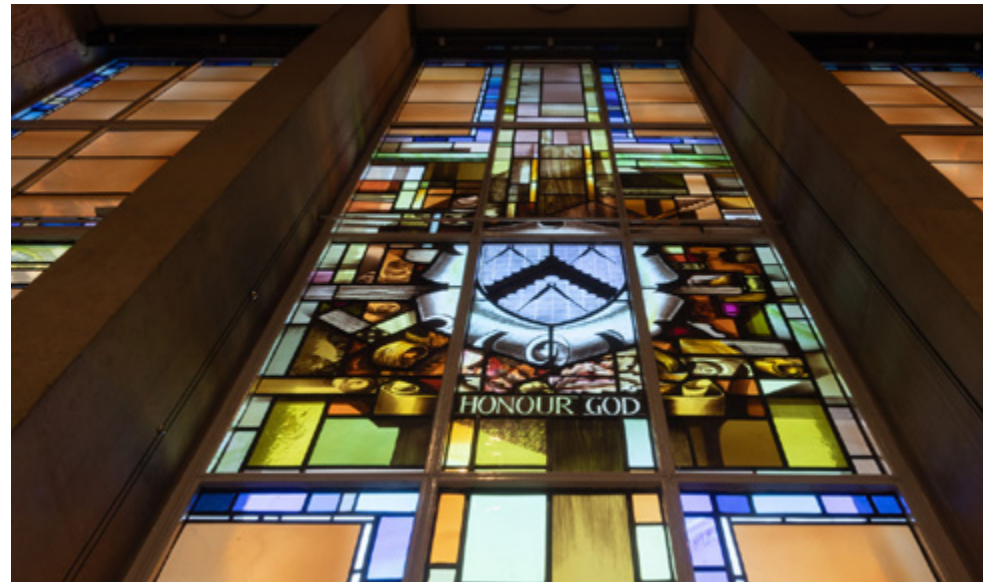
CARPENTERS' HALL

NEAREST TUBE STATION: MOORGATE/BANK

Carpenters' Hall is situated in the heart of the City of London, offering a number of spacious and versatile meeting rooms.

There are three main rooms available to hire on an exclusive basis: the Entrance Hall, Reception Room and Livery Hall. Each room is magnificently appointed with natural daylight, high ceilings, and a wealth of period antiques charting the history of this ancient company.

[FIND OUT MORE](#)



Capacities

Theatre: 220

Cabaret: 140

Standing reception: 350

Dinner: 200

Dinner Dance: 150

CHURCH HOUSE WESTMINSTER

NEAREST TUBE STATION: ST JAMES'S PARK



Capacities

Theatre: 600
Cabaret: 208
Dinner: 372
Dinner dance: 300
Standing reception: 550
Boardroom: 55

Located in Westminster within Dean's Yard, Church House is a Grade II listed, multi-purpose event venue set across three floors and is home to 19 meeting and conference spaces, along with a virtual studio. Part of The Corporation of Church House charity, first established in 1888, the event venue is a trading subsidiary for the corporation. With striking oak panelling, stone walls and feature windows, the venue is steeped in history with a rich heritage and notable links to royalty, the United Nations and Parliament.

Blending history with modern technology, event spaces include the large Assembly Hall designed by architect Sir Herbert Baker, with a striking 30-foot glass dome and space for 550 guests, the stately Hoare Memorial Hall, once used to host the House of Commons in the Second World War, and the modern Harvey Goodwin Suite, complete with web-streaming and live broadcasting facilities. The venue also offers a fully equipped virtual studio, ideally suited for immersive live experiences, broadcasts, hybrid events and TV production.

[FIND OUT MORE](#)

SEARCYS AT THE GHERKIN

NEAREST TUBE STATION: BANK / LIVERPOOL STREET

Choose to host your event in one of London's most enviable locations. Each of our meeting rooms at The Gherkin add something different to your event and promise a seamless and sophisticated experience.

Combined with our expertise in hospitality, there are few spots in London more fitting for an important gathering.

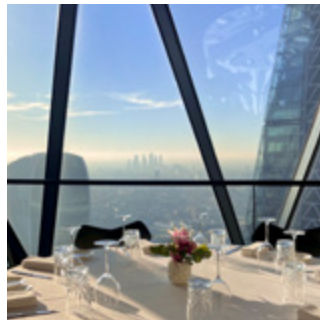
The private dining rooms located on level 38, offer a breathtaking view to impress your guests. Whether it is for a special birthday, a business lunch or even an intimate wedding reception, you can enjoy your own beautifully decorated private room with a view that stretches across our capital.

[FIND OUT MORE](#)



Capacities

Theatre: 140
Cabaret: 72
Dinner: 130
Dinner dance: 130
Standing reception: 260
Boardroom: 30



THE HAC

NEAREST TUBE STATION: MOORGATE

The HAC is quite unlike any other City venue; a magnificent Georgian building set in a five-acre garden hidden away in a quiet location just a couple of minutes' walk from Moorgate.

This unique, historic London venue offers a wide variety of event spaces from small meeting rooms for 10, to larger events for 690 guests. The HAC is able to offer the perfect setting for every type of event.

[FIND OUT MORE](#)



Capacities

Theatre: 400
Cabaret: 240
Dinner: 350
Dinner dance: 350
Standing reception: 690
Garden or terrace standing: 5000
Boardroom: 48

HORIZON 22 EVENTS

NEAREST TUBE STATION: BANK / LIVERPOOL STREET

Located on Level 58 of the City of London's newest and tallest building, Horizon 22 at 22 Bishopsgate is set to become one of London's most exclusive private events locations as it launches its private hire experiences.

Perched on Level 58 of the tallest skyscraper in the City of London, 22 Bishopsgate, Horizon 22 boasts Europe's highest public viewing gallery, offering breathtaking views of London from 254 meters above ground. With sweeping panoramas encompassing the city's iconic landmarks such as the 'Shard', 'Cheesegrater', 'Walkie Talkie', 'Gherkin', St Paul's Cathedral, the Tower of London, and Tower Bridge, Horizon 22 is now available for a range of events including standing receptions, seated dinners, fashion shows, product launches, filming productions, and memorable weddings.

As London's newest addition to the skyline, Horizon 22 is fully furnished with state-of-the-art technology, featuring an extensive array of dynamic and static LED spotlights, stage lighting, and an advanced acoustic sound system, tailored to enhance various event experiences.

Operating hours span from 6am to 9:30am and from 7pm to 3am, seven days a week. With a seating capacity of up to 280 guests or standing capacity of 500, the venue accommodates diverse occasions ranging from intimate dinners to grand receptions, fashion showcases, product launches, filming endeavours, and evening wedding receptions, ensuring every event is exceptional.

[FIND OUT MORE](#)



Capacities

Dinner: 280

Dinner Dance: 210

Standing Reception: 500

THE INNER TEMPLE

NEAREST TUBE STATION: BLACKFRIARS / TEMPLE

The Inner Temple, set within an award-winning garden, uniquely blends history, stunning architecture and culinary pedigree. It is an impressive and prestigious oasis in the City available for private hire for weddings and receptions, banqueting and corporate events.

[FIND OUT MORE](#)



Capacities

Theatre: 270

Cabaret: 105

Dinner: 240

Dinner dance: 130

Standing reception: 400

Terrace or garden standing: 600

Boardroom: 40

IET LONDON: SAVOY PLACE

NEAREST TUBE STATION: WATERLOO

Centrally located in London, IET London: Savoy Place offers state-of-the-art AV facilities, innovative catering and spectacular views over the River Thames.

The venue boasts 18 versatile and unique event spaces, from executive boardrooms, state of the art lecture theatres to historic libraries and contemporary spaces with skyline views. There is also as an unrivalled roof terrace with 180° views across the iconic London skyline.

FIND OUT MORE

Capacities

Theatre: 450

Cabaret: 144

Dinner: 250

Dinner dance: 200

Standing reception: 330

Terrace or garden standing: 200

Boardroom: 30



NATIONAL ARMY MUSEUM

NEAREST TUBE STATION: SLOANE SQUARE

Surrounded by stories of extreme training, secret missions and total dedication, the National Army Museum has always been an inspiring place to discuss ideas.

From our penthouse boardroom, with exceptional views over the Royal Hospital Chelsea, through to the spectacular new atrium at the centre of the museum, we have flexible spaces to suit all group sizes.

[FIND OUT MORE](#)



Capacities

Theatre: 200
Cabaret: 64
Dinner: 180
Dinner dance: 100
Standing reception: 540
Boardroom: 24

NO. 11 CAVENDISH SQUARE

NEAREST TUBE STATION: OXFORD CIRCUS

No. 11 Cavendish Square is the ideal location for all types of events, located just moments from Oxford Street and Regent Street, the venue offers spectacular airy and light spaces. All spaces are equipped with the best technology available for all events – from meetings and conferences, to summer and Christmas parties and weddings.

[FIND OUT MORE](#)



Capacities

Theatre: 280
Cabaret: 120
Dinner: 240
Dinner dance: 240
Standing reception: 350
Terrace or garden standing: 100
Boardroom: 24

ONE MOORGATE PLACE

NEAREST TUBE STATION: MOORGATE / BANK

One Moorgate Place, home of Chartered Accountants' Hall, is a beautiful Grade II listed venue in the heart of the City of London, with a range of versatile rooms that can accommodate all your needs.

This historic venue combines elegant features with contemporary style and can cater for up to 400 guests for conferences, meetings, weddings, parties, private dining and special occasions.

[FIND OUT MORE](#)



Capacities

Theatre: 270
Cabaret: 160
Dinner: 200
Dinner dance: 200
Standing reception: 400
Boardroom: 30

THE PORTRAIT BY RICHARD CORRIGAN

NEAREST TUBE STATION: CHARING CROSS / LEICESTER SQUARE

Occupying the top floor of the revamped National Portrait Gallery, The Portrait restaurant by Richard Corrigan in partnership with Searcys offers unrivalled panoramic views of Trafalgar Square and the Houses of Parliament.

The menu pays homage to great classics from Corrigan's career, while welcoming new signatures created to celebrate the famous gallery's multi-million transformation.

Light and airy, the restaurant's colour palette of the restaurant highlights shades of heritage green which compliments the colours chosen throughout the Gallery spaces. De Gournay, a British brand famed for its hand-painted wallpapers, created custom bespoke hand sewn fabric panels, illustrating the outlines of the iconic building exterior. The National Portrait Gallery team have curated a collection of five sculptures scattered across The Portrait Restaurant.

[FIND OUT MORE](#)



Capacities

The Portrait is now available for group dining from 10 guests and private events hire.

Exclusive hire

Dining: 80
Standing reception: 150



SADDLERS' HALL

NEAREST TUBE STATION: ST PAUL'S

Just a stone's throw from St Paul's, Saddler's Hall is ideally placed for private dinners and events in the city. The venue boasts numerous versatile event spaces to host your event, varying greatly in capacity and style.

The Hall is a unique venue for private and business entertaining. It is suitable for lunches, dinners, AGMs, presentations and awards ceremonies. It is also available for weddings throughout the year, where dancing is also permitted.

[FIND OUT MORE](#)



Capacities

Theatre: 150
Cabaret: 80
Dinner: 120
Dinner dance: 80
Standing reception: 200
Terrace or garden standing: 120

ST PANCRAS BAR AND BRASSERIE

NEAREST TUBE STATION: KING'S CROSS ST PANCRAS

Where old-world glamour meets fresh-faced flavours. Adorned with old station clocks and private booths lit by vintage-inspired lighting, the St Pancras Brasserie and Bar whisks you back to the golden age of travel.

Located above the hustle and bustle of St Pancras International station, our Brasserie is in the ideal location to hold your business meeting, with both private and semi-private areas available.

[FIND OUT MORE](#)



Capacities

Dinner: 180
Dinner dance: 150
Standing reception: 250
Terrace standing: 400
Boardroom: 14

STATIONERS' HALL

NEAREST TUBE STATION: ST PAUL'S

Located by St Paul's Cathedral, Stationers' Hall is one of the few ancient Livery Halls remaining in the City of London. First built after the Great Fire of London in 1673, the Grade I listed building underwent a £7.5 million refurbishment in 2022, reopening its doors in June with the addition of new modern facilities and flexible event spaces.

Its event spaces include a set of magnificent, interlinking rooms, including The Main Hall with carved oak panelling dating back to the 1600s. Guests can also enjoy a beautiful garden – a rare feature in the centre of the City – that can be hired for weddings, receptions, parties and barbecues.

[FIND OUT MORE](#)



Capacities

Theatre: 200

Cabaret: 96

Dinner: 200

Dinner dance: 156

Standing reception: 400

Terrace or garden standing: 150

Boardroom: 32

SEARCYS BAR AND BRASSERIE AT SURVEYORS HOUSE, WESTMINSTER

NEAREST TUBE STATION: WESTMINSTER

Located in the heart of Westminster, Searcys Bar and Brasserie at Surveyors House is situated on the ground floor of No 11 Great George Street. The new Searcys restaurant is surrounded by iconic landmarks, like Big Ben, the Houses of Parliament, and Westminster Abbey. The venue combines Victorian elegance with modern design.

Elevate your next gathering with our private dining options at Searcys Bar and Brasserie at Surveyors House. Our elegant first-floor event space can accommodate up to 60 guests, making it the perfect setting for intimate celebrations, corporate events, or family reunions. With a tailored menu featuring seasonal dishes and exceptional service, we ensure that every detail is thoughtfully curated to create an unforgettable experience.

[FIND OUT MORE](#)



Capacities
Reception: 60

SURVEYORS HOUSE AT RICS WESTMINSTER

NEAREST TUBE STATION: WESTMINSTER

Welcome to Surveyors House at RICS in Parliament Square, London.

Housed within a magnificent Victorian building, our venue retains its original charm with features such as a grand marbled reception and a mosaic tiled floor in the lobby. The listed lift adds to the building's character, offering a glimpse into its rich history.

Equipped with state-of-the-art AV facilities in all meeting rooms and spaces, we ensure seamless presentations and memorable experiences for all attendees. Our innovative catering options complement the event perfectly, while the Terrace offers unparalleled views of Parliament Square and the iconic Big Ben.

Whether you're hosting a corporate event or a special celebration, Surveyors House provides a prestigious setting that will leave a lasting impression on your guests. Contact us today to discuss your event requirements and let us help you create an unforgettable experience.

[FIND OUT MORE](#)



Capacities

Theatre: 130
Cabaret: 80
Dining: 90
Dinner and Dance: 90
Standing reception: 210
Terrace standing: 40
Boardroom: 25

THE ROYAL INSTITUTION

NEAREST TUBE STATION: GREEN PARK

Tucked away in a tranquil Mayfair street just yards from the hustle and bustle of Piccadilly, you will find The Royal Institution, a unique venue in one of Central London's most prestigious locations.

The home of science and innovation for over 200 years, The Royal Institution is a place that was created to find solutions and answers, only one question remains: why would you look anywhere else for your corporate event?

[FIND OUT MORE](#)



Capacities

Theatre: 440
Cabaret: 56
Dinner: 140
Dinner dance: 90
Standing reception: 750
Boardroom: 42

THE VIEW, ROYAL COLLEGE OF SURGEONS

NEAREST TUBE STATION: HOLBORN

London's newest destination venue The View is at the heart of The Royal College of Surgeons of England. Founded by Royal Charter in 1800, it is the professional home of surgery in England and internationally.

The View is located on the 6th floor of the building and boasts beautiful views over the City, a large terrace for guests to enjoy and transformational facilities for all types of events. The unique Lumley Library is located on the 1st floor of the building and is available for private hire in the evenings.

[FIND OUT MORE](#)



Capacities

Theatre: 300
Cabaret: 120
Dinner: 220
Dinner dance: 220
Standing reception: 300
Boardroom: 63

The Lumley Library

Theatre: 100
Dinner: 90
Standing reception: 150

VINTNERS' HALL

NEAREST TUBE STATION: MANSION HOUSE

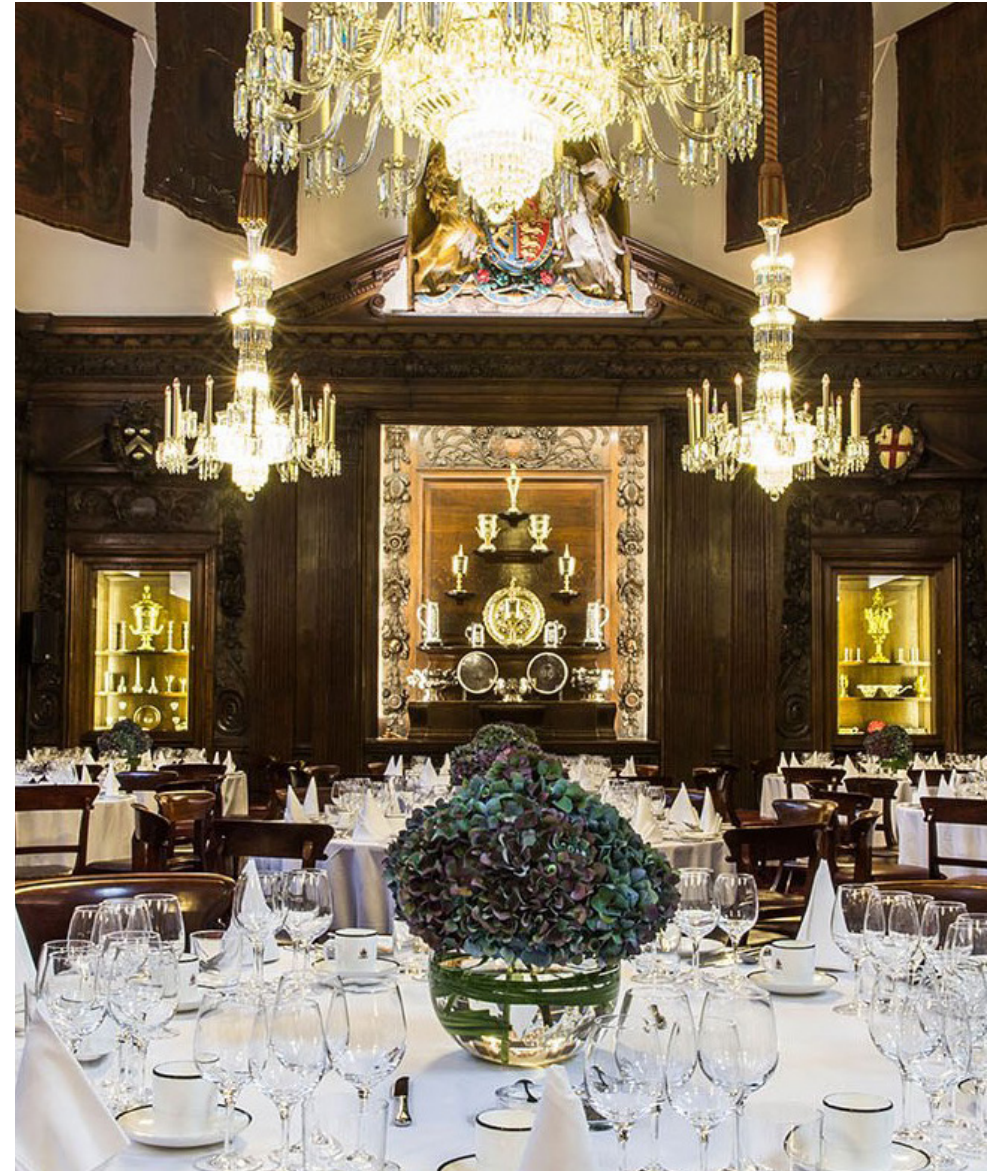
Vintners' Hall is enjoyed by members of the Worshipful Company of Vintners' and is the spiritual home of the wine trade. Its 17th century architecture and baroque grandeur create the perfect backdrop to any occasion. The hall is a magnificent venue right in the heart of the City of London. Whether you are organising a business meeting, celebratory dinner, wedding or wine tasting, you can be assured of our excellent service and hospitality.

[FIND OUT MORE](#)



Capacities

Theatre: 150
Cabaret: 80
Dinner: 120
Dinner dance: 100
Standing reception: 250
Terrace or garden standing: 25
Boardroom: 25



SEARCYS ROLLS-ROYCE CHAMPAGNE BAR

MOBILE

Champagne and nibbles, anyone? Searcys Rolls-Royce Champagne Bar at Battersea Power Station marks the vintage car's first home, exclusively serving Searcys signature fizz and nibbles.

Experts in all things fizz, the drinks list includes a full range of Searcys Selected Champagnes, English Sparkling Wine and the limited edition Searcys Blanc de Blancs Champagne.

[FIND OUT MORE](#)



Capacities

Receptions up to 30



THE PUMP ROOM, BATH

NEAREST STATION: BATH SPA

The Grand Pump Room was built in the early 1790s, and soon became the destination for high society to meet and 'take the waters' from the hot springs while enjoying lavish entertainment. Famous authors such as Jane Austen mentioned it in her novels 'Northanger Abbey' and 'Persuasion', as where 'every creature in Bath was to be seen...' and Mary Shelley wrote the iconic 'Frankenstein' while staying in lodgings next door. Over 200 years later, most of the neo-classical style and Georgian features remain unchanged – creating the perfect ambience in which to enjoy the quintessentially English custom of afternoon tea.

[FIND OUT MORE](#)



Capacities

Theatre: 300

Cabaret: 120

Dinner: 200

Dinner dance: 160

Standing reception: 300

Terrace or garden standing: 80

Boardroom: 25

THE ROMAN BATHS, BATH

NEAREST STATION: BATH SPA

Adjoining the Roman Baths is the stunning Pump Room complex. This elegant bath venue with its Corinthian columns, glittering chandelier and spa fountain makes for an unforgettable visit. The Pump Room is available to hire for private events and weddings in the evening either independently, or alongside the Roman Baths.

[FIND OUT MORE](#)



Capacities

Theatre: 25

Dinner: 70

Standing reception: 80



SEARCYS
—events



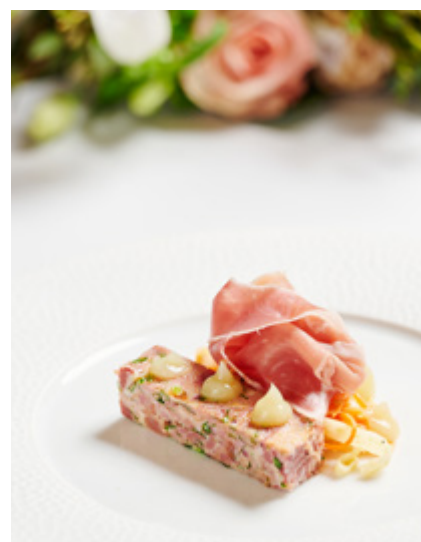
**WE CREATE FABULOUS
EVENTS WHATEVER OR
WHEREVER THE SPACE**

We've shown time and again that we know our clients inside out, providing outstanding hospitality in complex and historically or culturally sensitive spaces.

Get in touch today!



www.searcysevents.co.uk



EST ♦ 1847

SEARCYS

LONDON

*Make it Special.
Make it Searcys.*